

Standardspringprüfung

Klasse: A

08.03.2013

Richtverf.: A2

Tempo: 350 m/Min

Hindernisse: 8

1. Stechen über:

Bahnlänge: 320 mtr.

Sprünge: 9

Bahnlänge: 0 mtr.

FEI RG / Art.

Erlaubte Zeit: 55 sek.

Erlaubte Zeit: 0 sek.

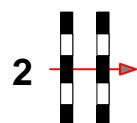
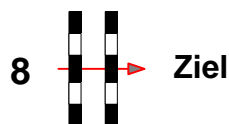
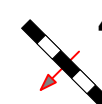
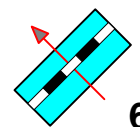
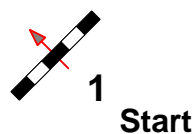
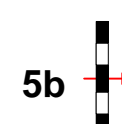
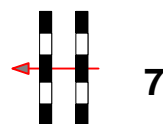
Höhe: 1,10 mtr.

Höchstzeit: 110 sek.

Höchstzeit: 0 sek.

Einritt

Ausritt



10

15

20

25

30

35

40

45

50

55

60

65

70